

Cambridge Road, Bromley | £850,000



A fabulous 4 bedroom Victorian Semi detached house located in a sought after road in Bromley North.

Bursting with character and flooded with natural light, the house has all of the features you would hope to find in a house from this era.

Wooden floors, original fireplaces in every room, sash windows and original coving along with spacious rooms with high ceilings. Downstairs there are 2 good size reception rooms currently set up as a living room and dining room and an Office and utility room with toilet.

There is a large separate kitchen to the rear of the house leading out on to a picturesque lawned garden.

Upstairs and you will find 3 doubles and 1 single bedroom as well as a lovely modern family bathroom.

The house has a perfect mix of old and new running throughout it with its mix of modern kitchen and bathroom with all original Victorian features. A new central heating boiler has recently been fitted.

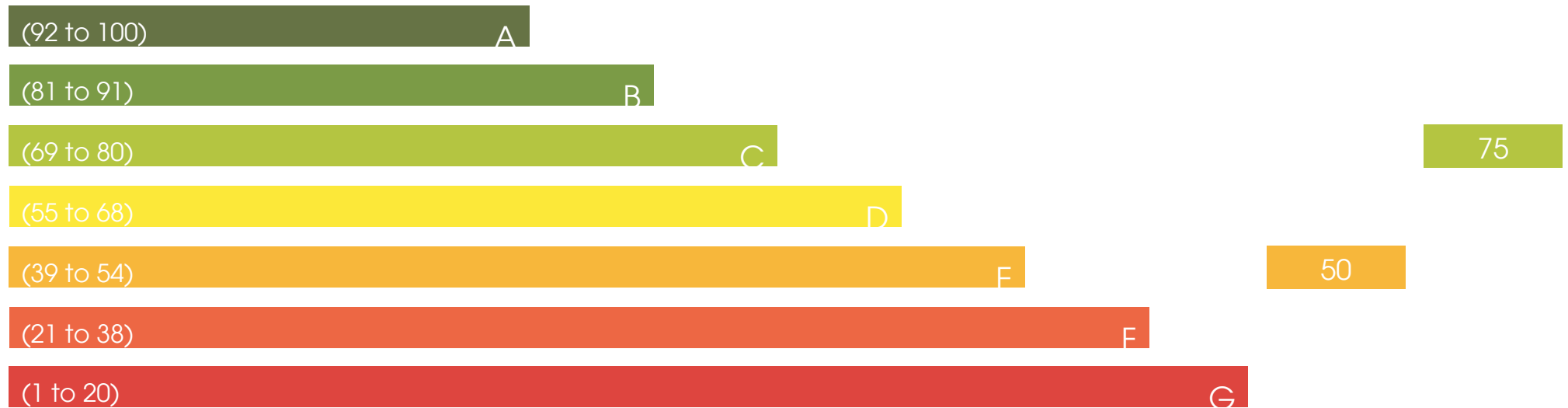
Available Chain Free and ready for viewing, contact us to take a look at this beautiful house.



Energy Efficiency Rating

Current

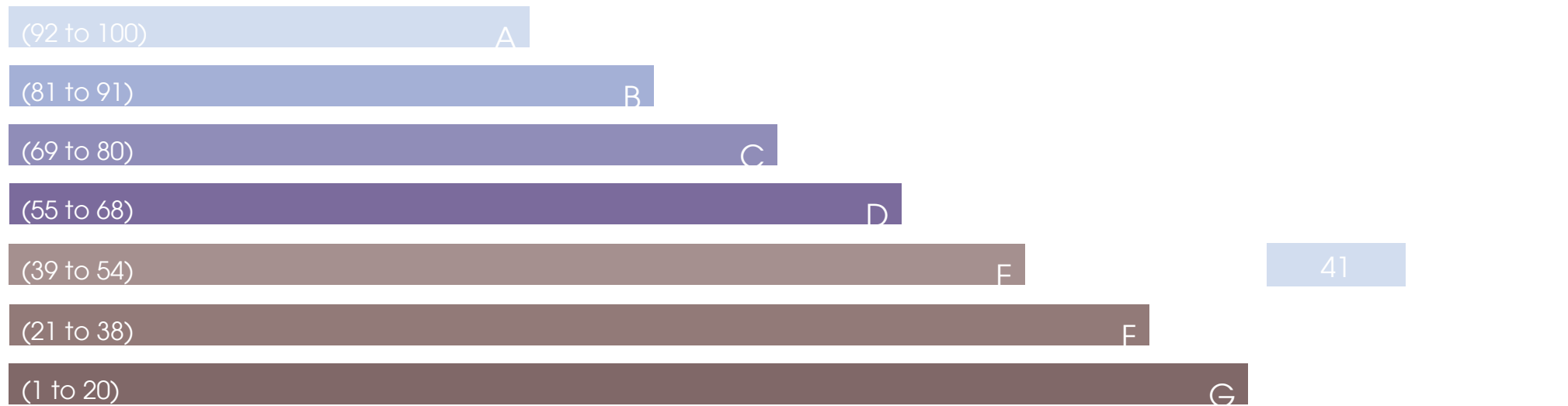
Potential

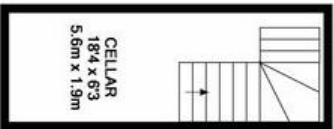


Environmental Impact (CO₂) Rating

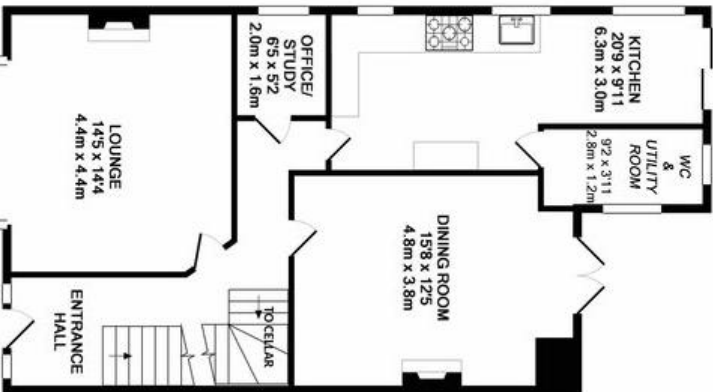
Current

Potential





CELLAR
APPROX. FLOOR
AREA 116 SQ.FT.
(10.8 SQ.M.)



●●● bromley property company

TOTAL APPROX. FLOOR AREA 1486 SQ. FT. (139.0 SQ.M.)

Whilst every attempt has been made to ensure the accuracy of the floor plan contained here, measurements of doors, windows, rooms and any other items are approximate and no responsibility is taken for any error, omission, or mis-statement. This plan is for illustrative purposes only and should be used as such by any prospective purchaser. The services, systems and appliances shown have not been tested and no guarantee as to their condition or operation can be given. Plans with Metropix (2018)