

Kechill Gardens, Bromley | £749,995



**** Offers in Excess of £749,995 ****

This stunning 5 bedroom semi detached house is located in a quiet sought after road in catchment for and in walking distance of Hayes Secondary and Primary Schools.

Offering over 1800 sq ft of living space, the house offers lots of space and could be configured in different ways depending on how it best suits your needs.

At present the property has a lovely large living room to the front of the property as well as a downstairs master bedroom with ensuite shower room. There is also a study/ 6th bedroom and WC as well as a magnificent kitchen diner with bi-fold doors leading out the beautiful rear garden that has patio, decking and lawn areas.

Upstairs there are 4 double bedrooms all of varying sizes but all able to accommodate a double bed. There is also a modern family shower room.

The house is stylishly finished throughout with beautiful Karndean wood effect flooring downstairs and lots of natural light running throughout the house.

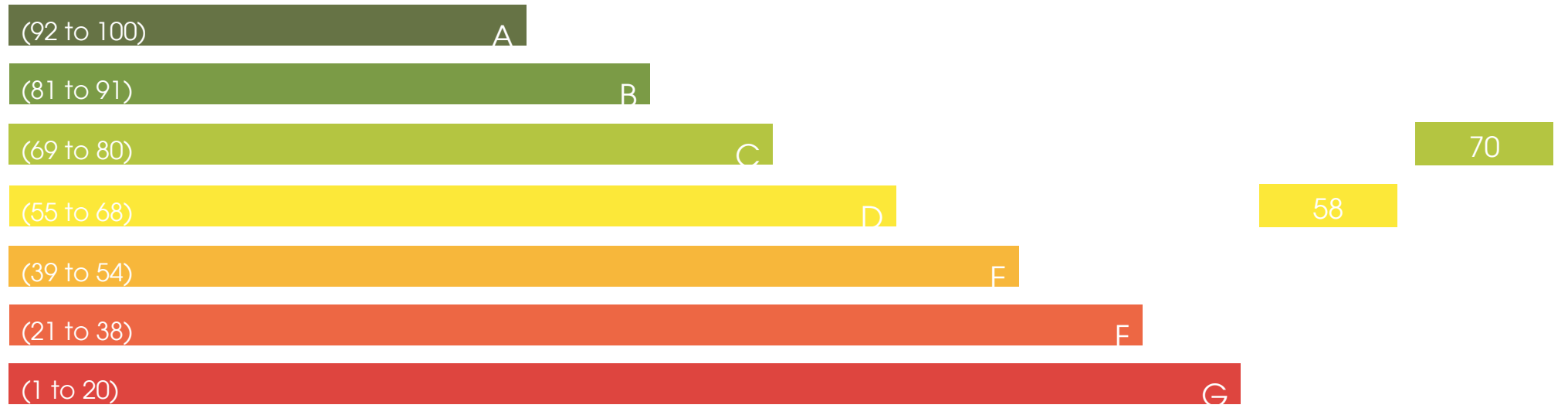
Hayes High Street is a 10 minute walk away and Bromley South is also within easy reach.

Available with a completed onward chain.





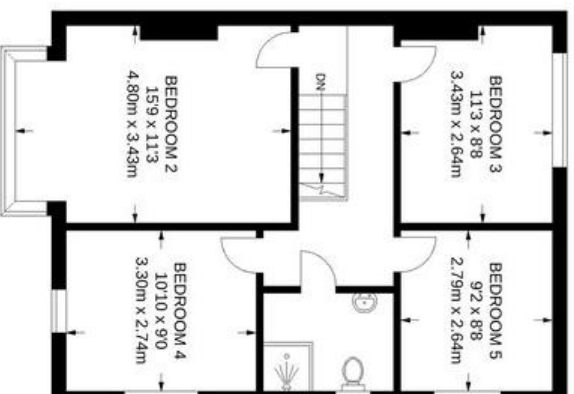
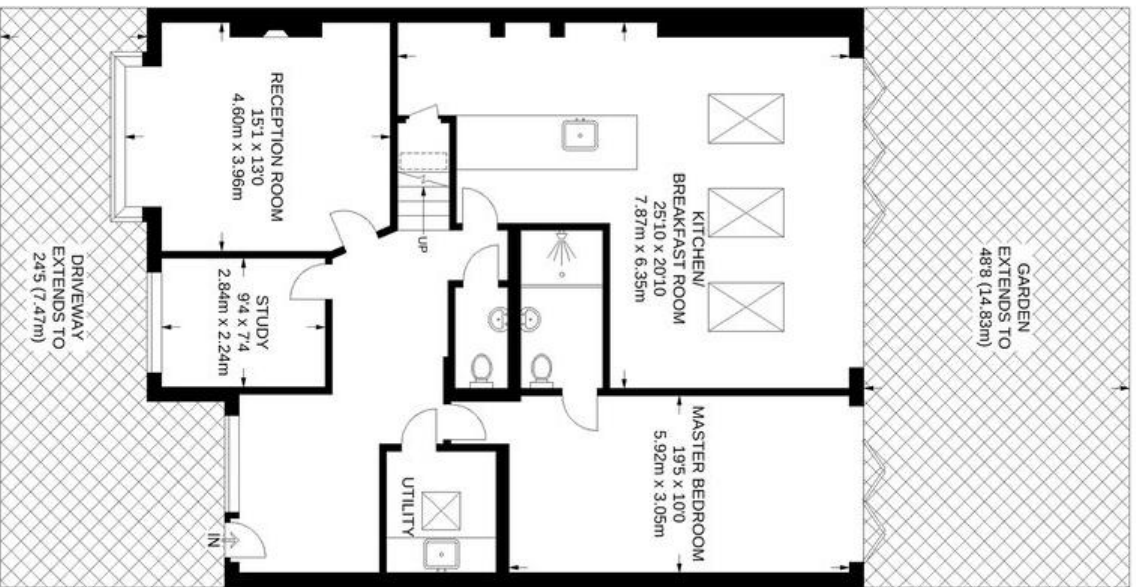
Energy Efficiency Rating



Environmental Impact (CO₂) Rating

Current Potential





APPROXIMATE GROSS INTERNAL AREA
1802 SQ FT / 167.4 SQ M