

Fairlawn Park, London | £1,750 PCM



This lovely refurbished 3 bedroom end of terrace house is located within walking distance of Sydenham High street and Lower Sydenham Train Station.

The house is finished to a high standard and offers a good size open plan living room and dining room that runs the depth of the house.

There is also a modern fitted kitchen to the rear that leads out to the rear garden that has been recently landscaped and is ideal for those of you that are looking for a garden to love and cherish!

Upstairs and there are 2 double bedrooms and a single bedroom as well as a modern family shower room with separate WC.

The house has lots of natural light running through it and has a lovely feel to it.

Ideal for a small family or a professional couple, the property is available immediately part furnished.

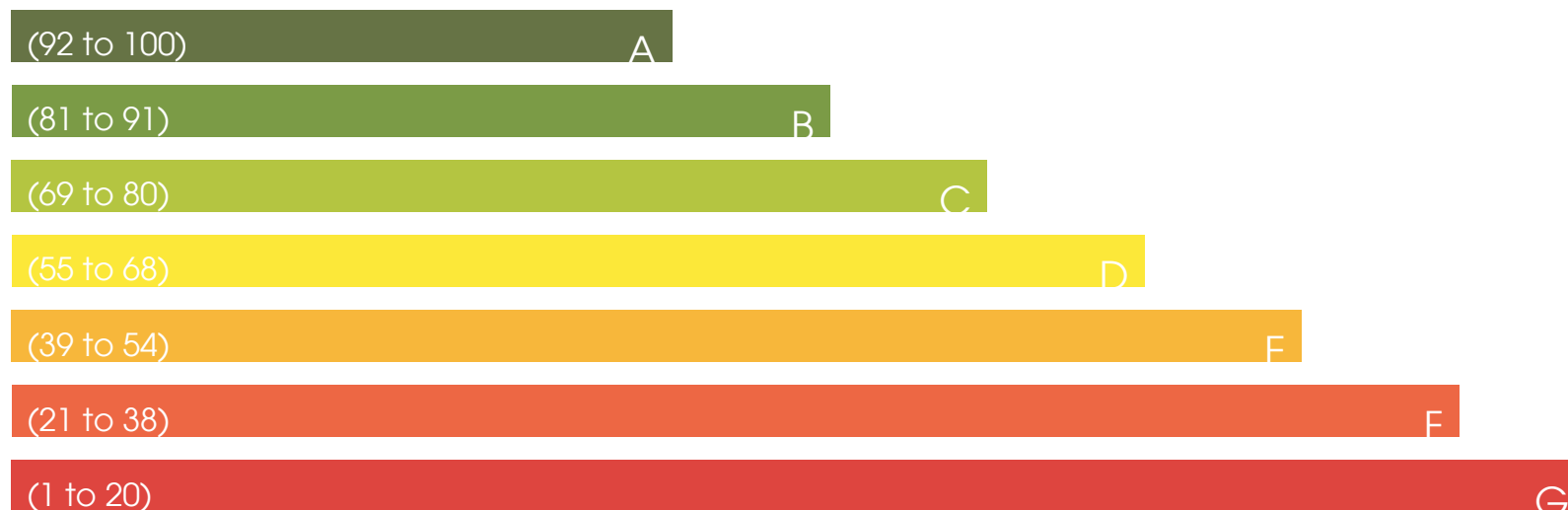
Contact us ASAP to arrange a viewing to avoid missing out in this great opportunity.



Energy Efficiency Rating

Current

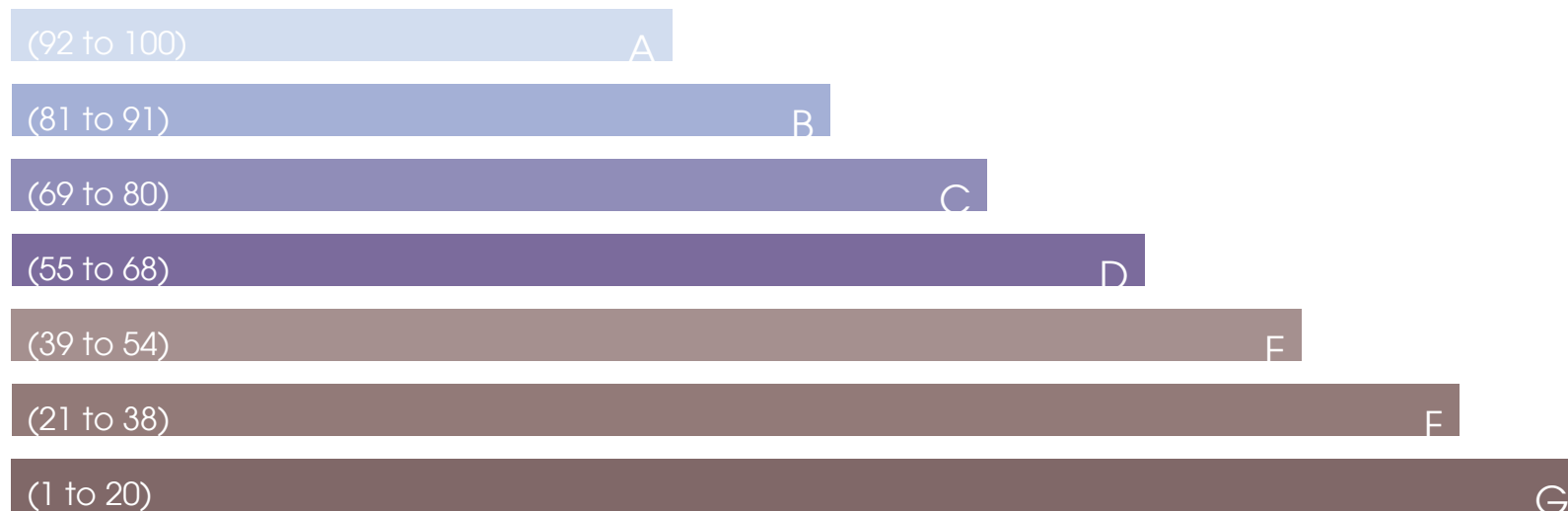
Potential



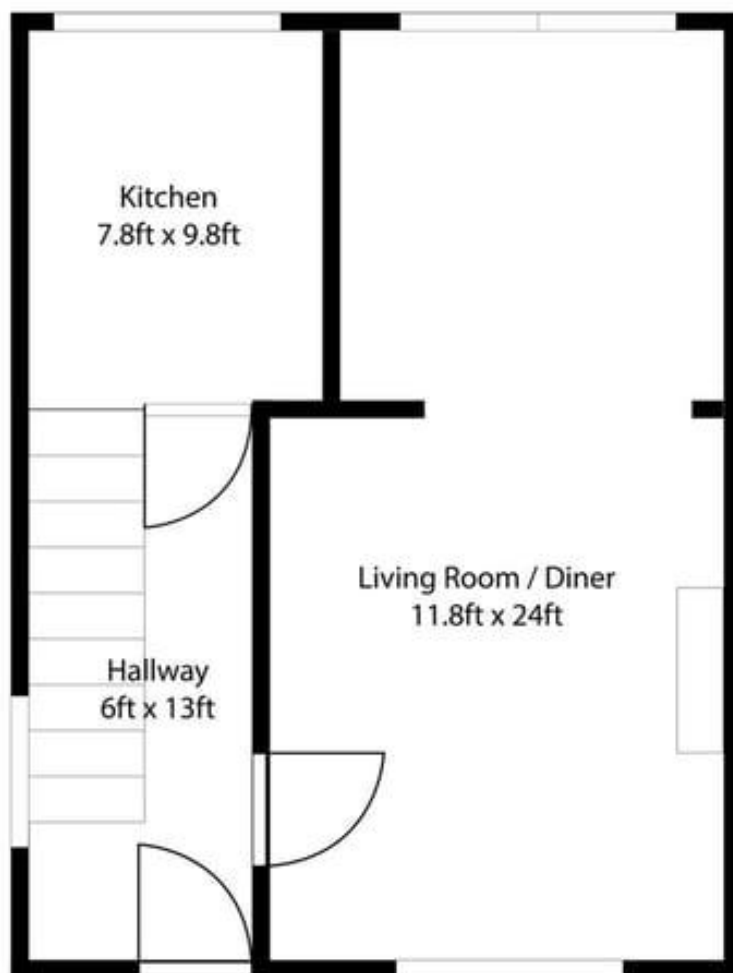
Enviromental Impact (C0₂) Rating

Current

Potential



Ground Floor



First Floor

