

## Hawes Lane, West Wickham | £875,000



This beautiful 4 bedroom semi-detached house in West Wickham is offered in immaculate condition and is perfect for a family looking to settle into a good size family house.

Located very close to Hawes Down Junior School and within the catchment area for local secondary schools.

The house offers 2 large reception rooms and an oversized kitchen leading onto a conservatory. Also off the kitchen is a laundry room leading onto a shower room and the garage.

Upstairs you will find 4 good size bedrooms and a family bathroom.

Out into the very well kept garden and you will also find a separate home office with it own power, ideal for anyone working from home.

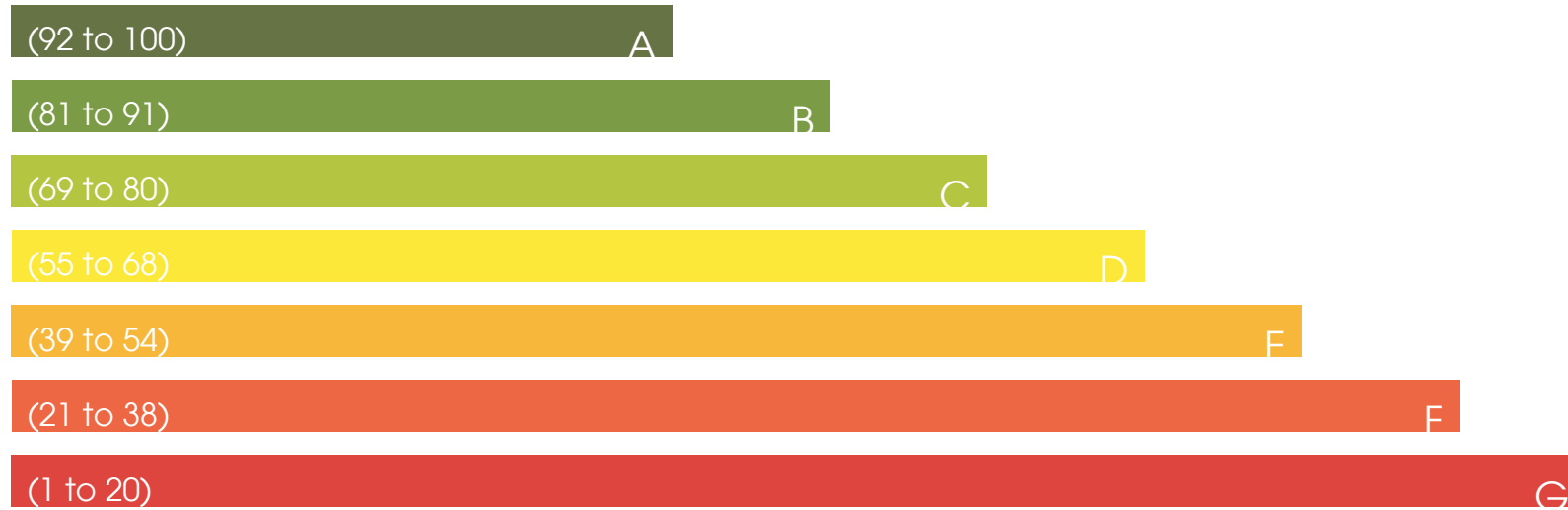
“ Please note we are only arranging essential viewings at the moment for people who are either under offer or chain free due to the high Covid levels and instructions from the Government.”



## Energy Efficiency Rating

Current

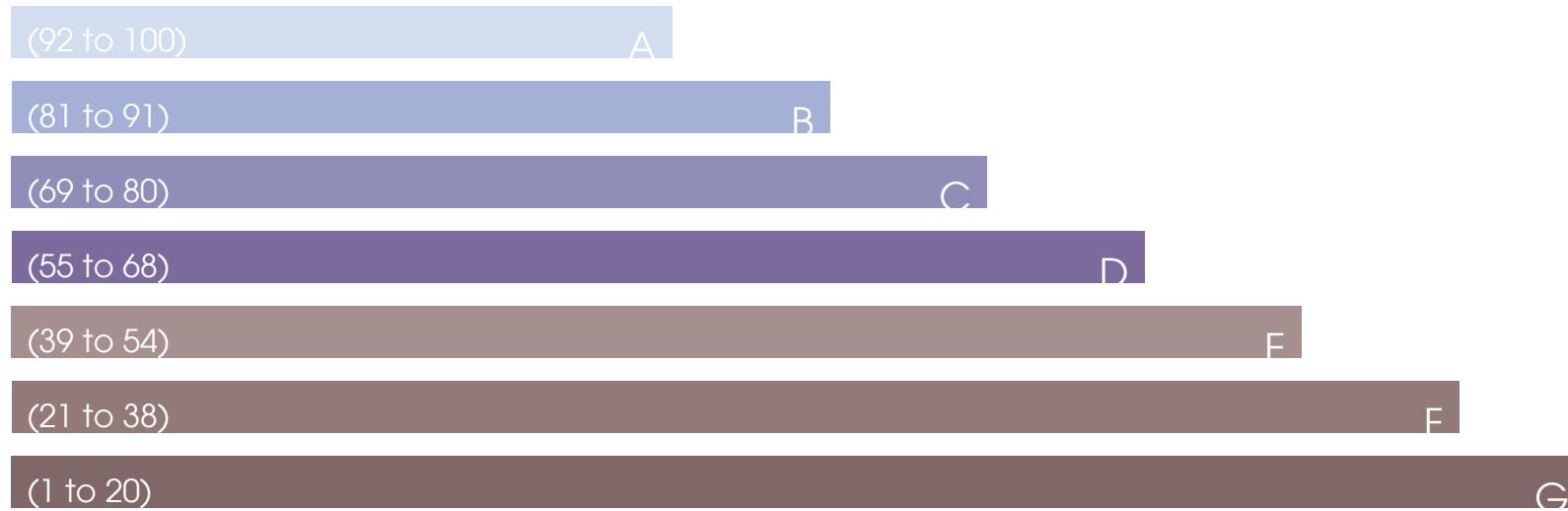
Potential



## Environmental Impact (CO<sub>2</sub>) Rating

Current

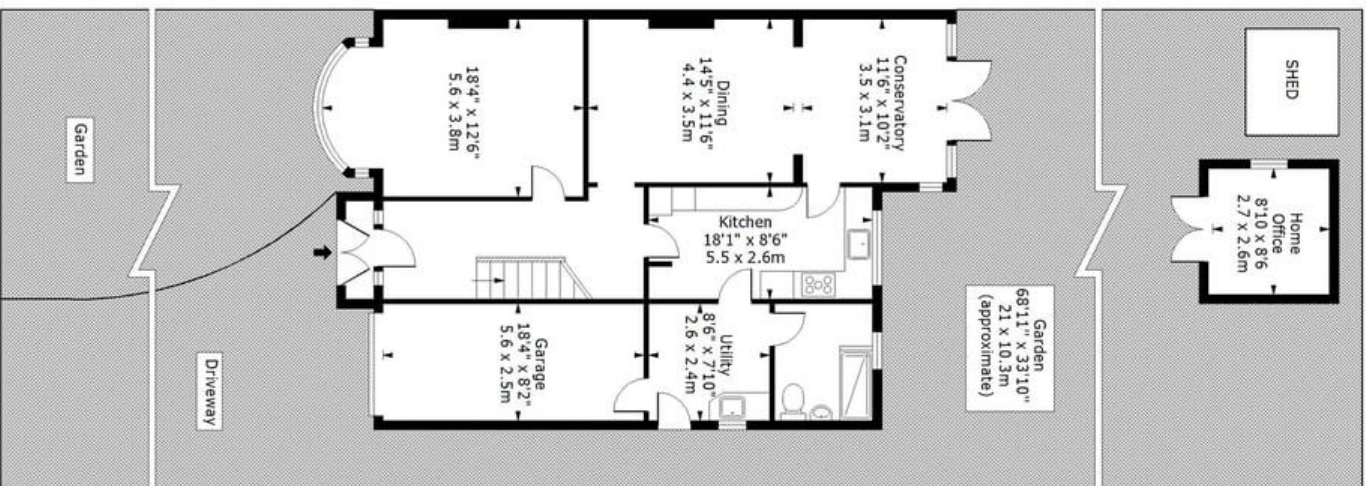
Potential



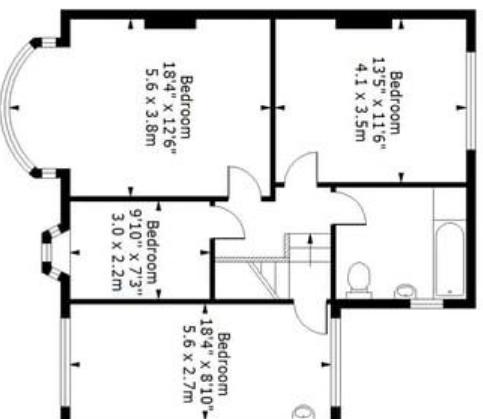


# Hawes Lane, West Wickham, BR4

Approx. Gross Internal Area 1801 Sq Ft - 16737 Sq M



**Ground Floor**  
Floor Area 1064 Sq Ft - 98.85 Sq M



**First Floor**  
Floor Area 737 Sq Ft - 68.47 Sq M

For Illustration Purposes Only - Not To Scale

