

## Tremaine Road, London | £1,950 PCM



Located in a quiet tree lined road close to both Elmers End and Birkbeck train stations is this lovely 3 bedroom terraced house.

Offering over 1000 Sq ft of living space, the house which is wider than some of the other houses of its type has a good size living room to the front of the property and a dining room to the rear.

There is also a separate kitchen at the back that leads out to a large well kept garden that is over 100ft long.

Upstairs there are 2 good size double bedrooms as well as a single bedroom and a modern family bathroom with separate shower cubicle.

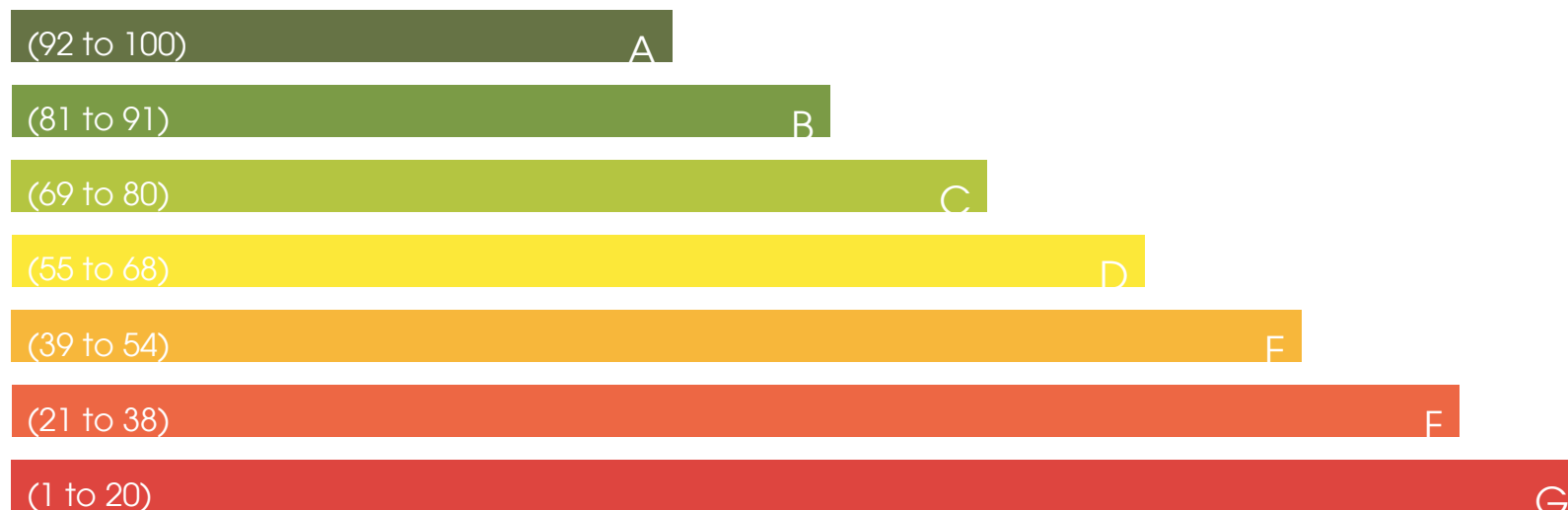
Unfurnished and available immediately.



## Energy Efficiency Rating

Current

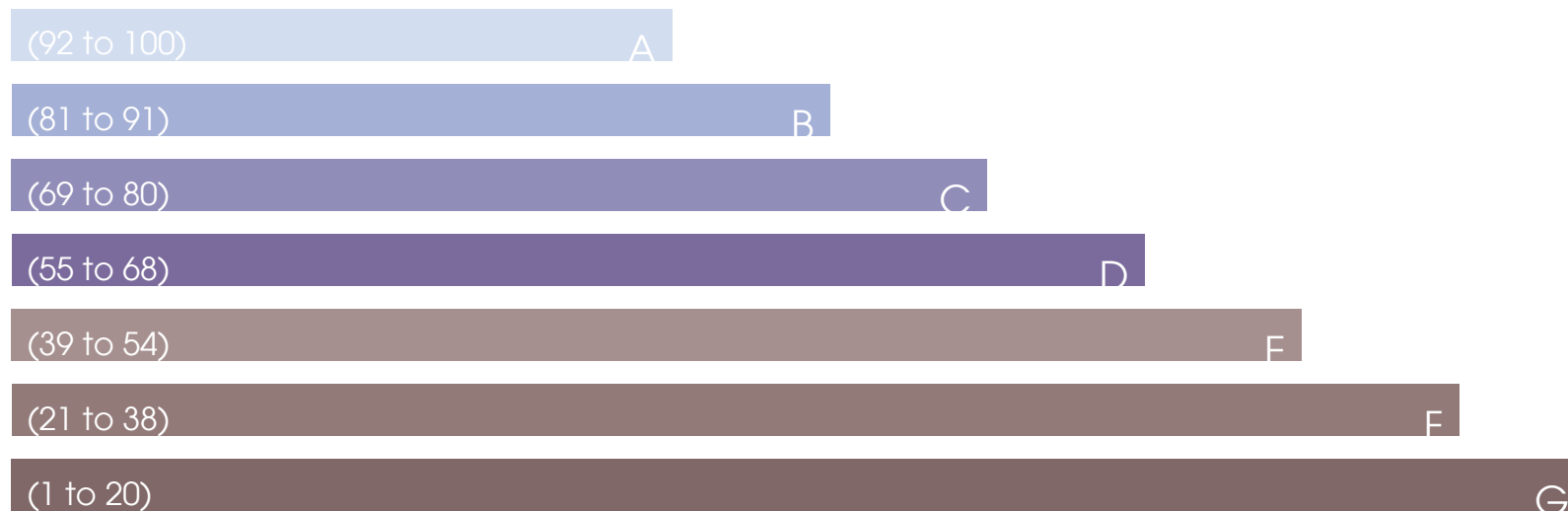
Potential

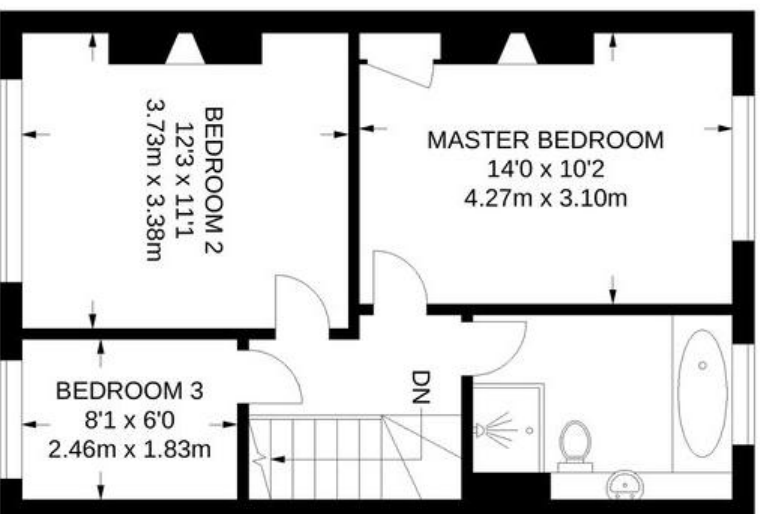
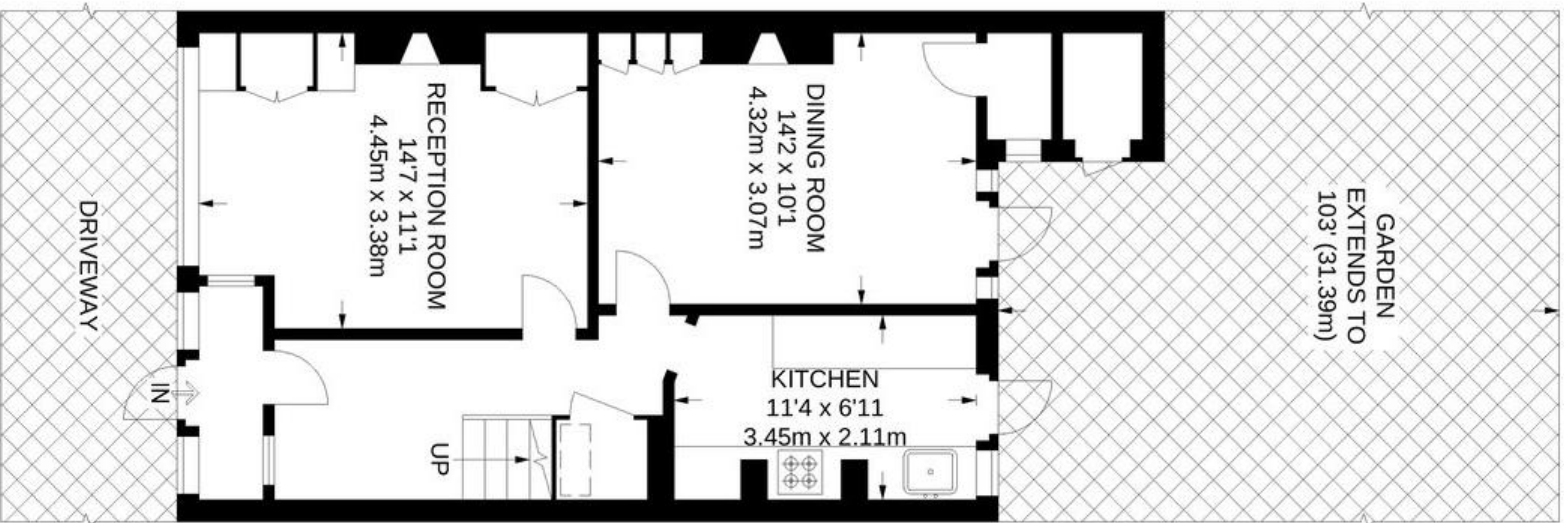


## Enviromental Impact (C0<sub>2</sub>) Rating

Current

Potential





APPROXIMATE GROSS INTERNAL AREA  
1002 SQ FT / 93.1 SQ M