

Pope Road, Bromley | £2,500 PCM



This beautiful, 3 bedroom semi-detached victorian house is finished to a really high standard and has been extended to create more space. Offering 1280 sq ft of living space the property has a good size living room to the front of the house. To the rear is a stunning open plan kitchen diner that leads out to the rear garden and also has a shower room with WC just off it.

Upstairs to the first floor and you'll find the master bedroom to the rear that has a walk in wardrobe and ensuite bathroom, to the front of the house is the second bedroom that is also a double.

Upstairs to the converted loft and you'll find the third bedroom and another bathroom.

The house has amazing amounts of natural light running through it and is really a house that you would be proud to call home.

Available unfurnished from 14 July 2023.

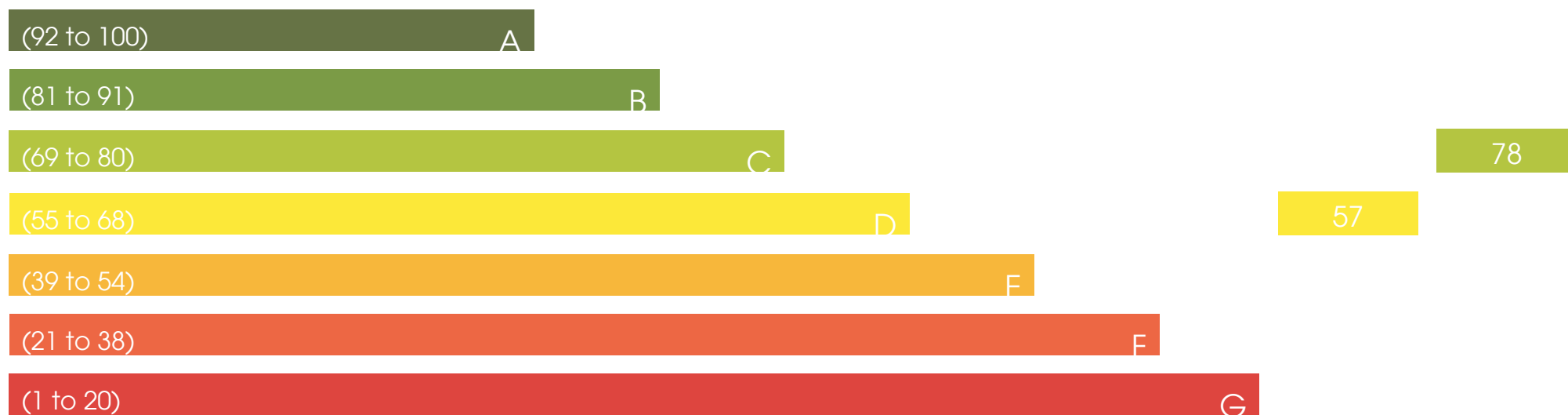
Sorry, no pets allowed.

Call us to arrange to see this beautiful house.





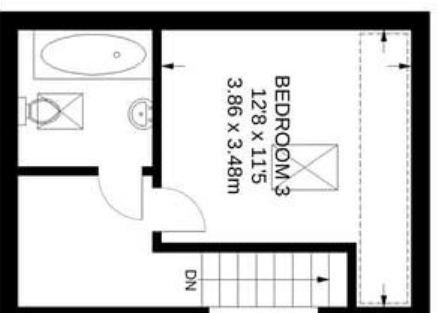
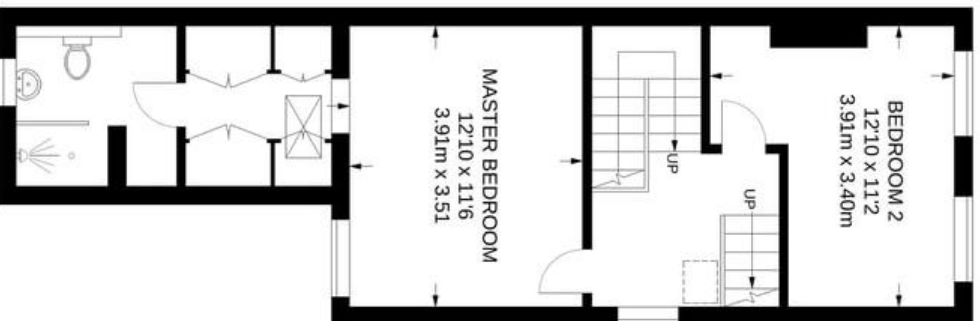
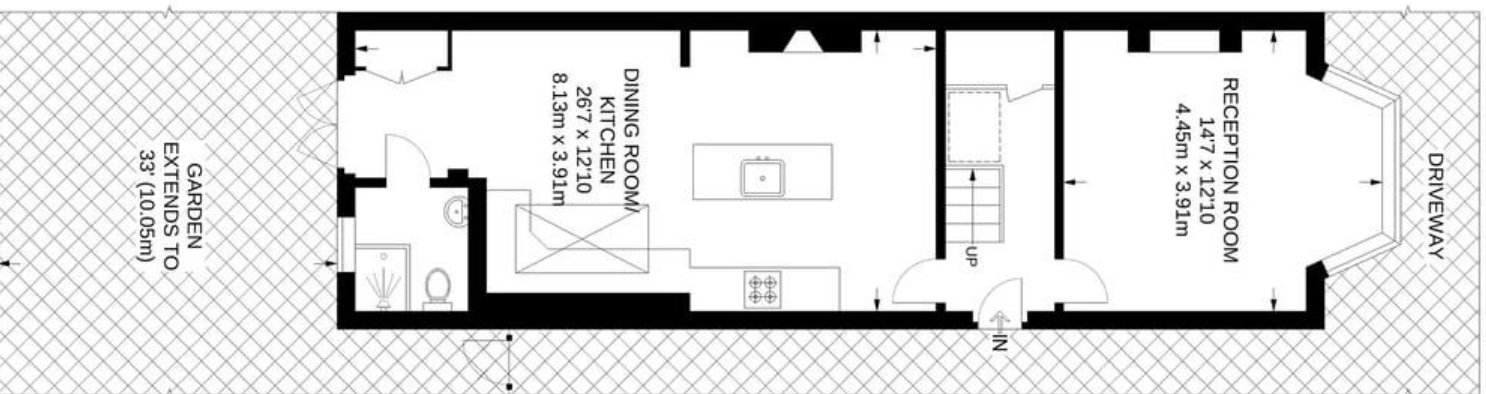
Energy Efficiency Rating



Enviromental Impact (C0₂) Rating

Current Potential





APPROXIMATE GROSS INTERNAL AREA
1280 SQ FT / 118.9 SQ M