

Pickhurst Lane, West Wickham | £2,750 PCM



This lovely 4/5 bedroom detached house offering 1728 sq ft of living space is located close to Pickhurst Primary School.

The house has a really nice open plan feel it and has a really great flow to it. There is large reception to the front of the house as well as a dining room to the rear. An office is also situated towards the front and there is also a 5th downstairs bedroom and a shower room.

The kitchen has a large lantern skylight creating an extra spacious feel and is fitted with high spec Siemens mod cons with a fantastic centre island that leads towards the house being fantastic for entertaining and also has a separate utility room.

Upstairs and there are 4 more bedroom all of which are doubles of varying size as well as a modern family bathroom.

The property is finished to high standard and really is a great family home.

The rear garden wraps around the side of the house and extends to 68 ft.

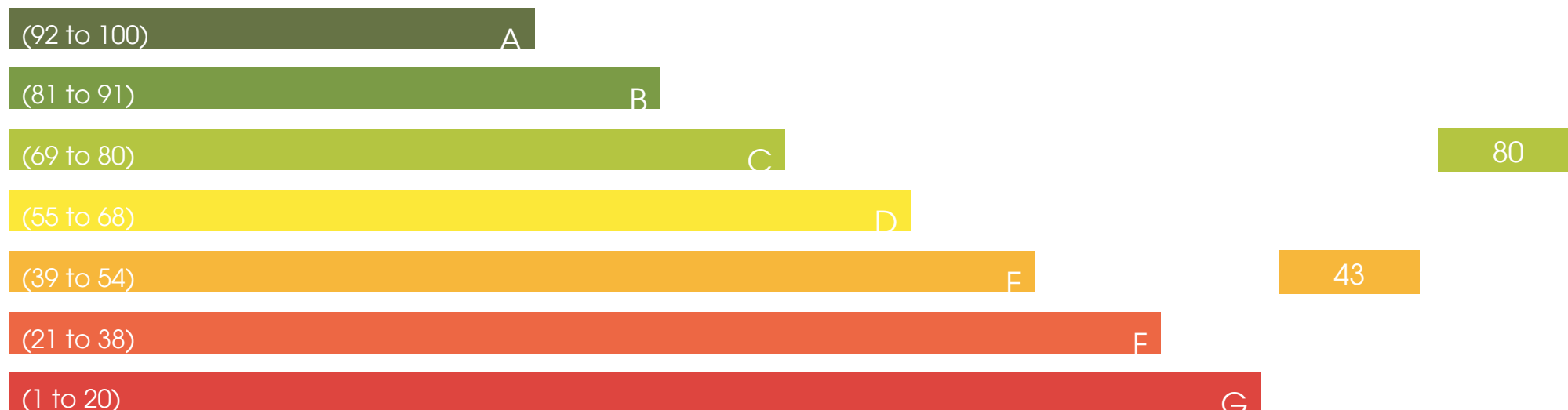
Available unfurnished from early October 2022 contact us to arrange to see this lovely home.



Energy Efficiency Rating

Current

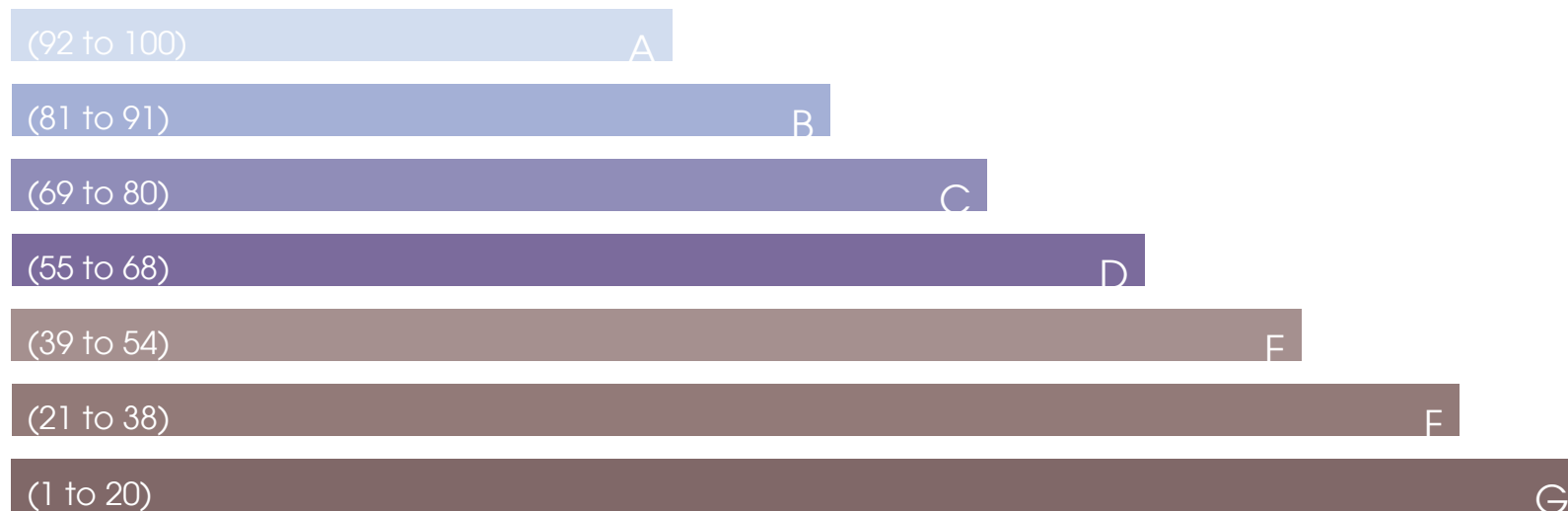
Potential

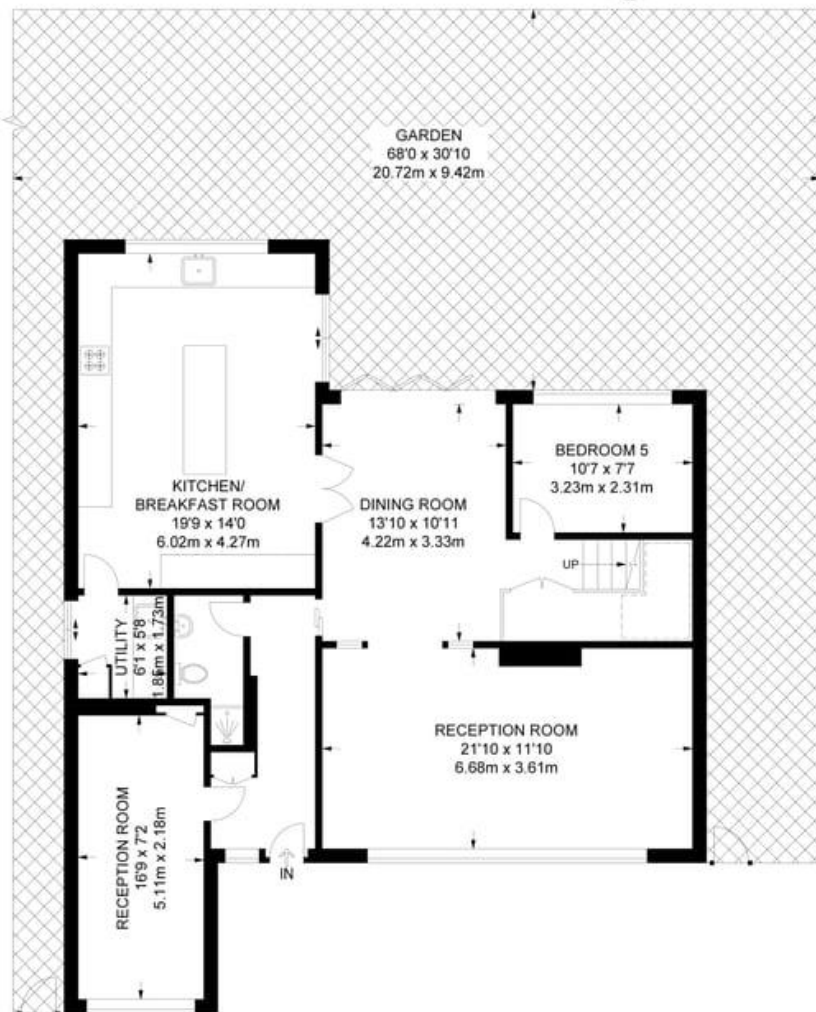


Enviromental Impact (C0₂) Rating

Current

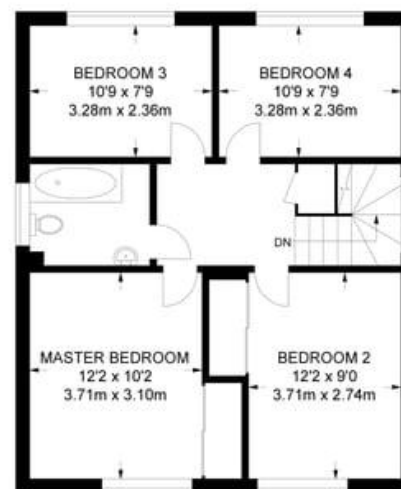
Potential





GROUND FLOOR
1142 SQ FT / 106.1 SQ M

APPROXIMATE GROSS INTERNAL AREA
1728 SQ FT / 160.5 SQ M



FIRST FLOOR
586 SQ FT / 54.4 SQ M