

## Hawes Lane, West Wickham | £2,500 PCM



This beautiful 4 bedroom semi-detached house in West Wickham is offered in immaculate condition and is perfect for a family looking to settle into a good size family house.

Located very close to Hawes Down Junior School and within the catchment area for local secondary schools the house offers 2 large reception rooms and an oversized kitchen leading onto a conservatory. Also off the kitchen is a laundry room leading onto a shower room and the garage.

Upstairs you will find 4 good size bedrooms and a family bathroom.

Out into the very well kept garden and you will also find a separate home office with it own power, ideal for anyone working from home.

The house has lots of natural light flowing throughout it and is available unfurnished.

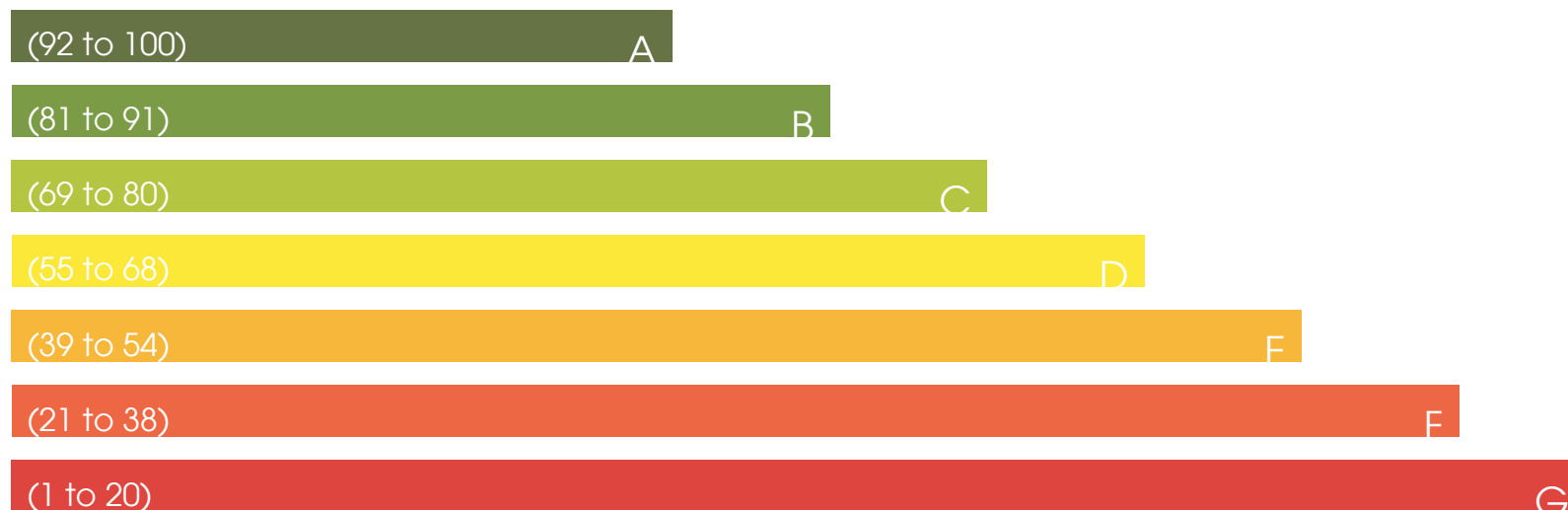




## Energy Efficiency Rating

Current

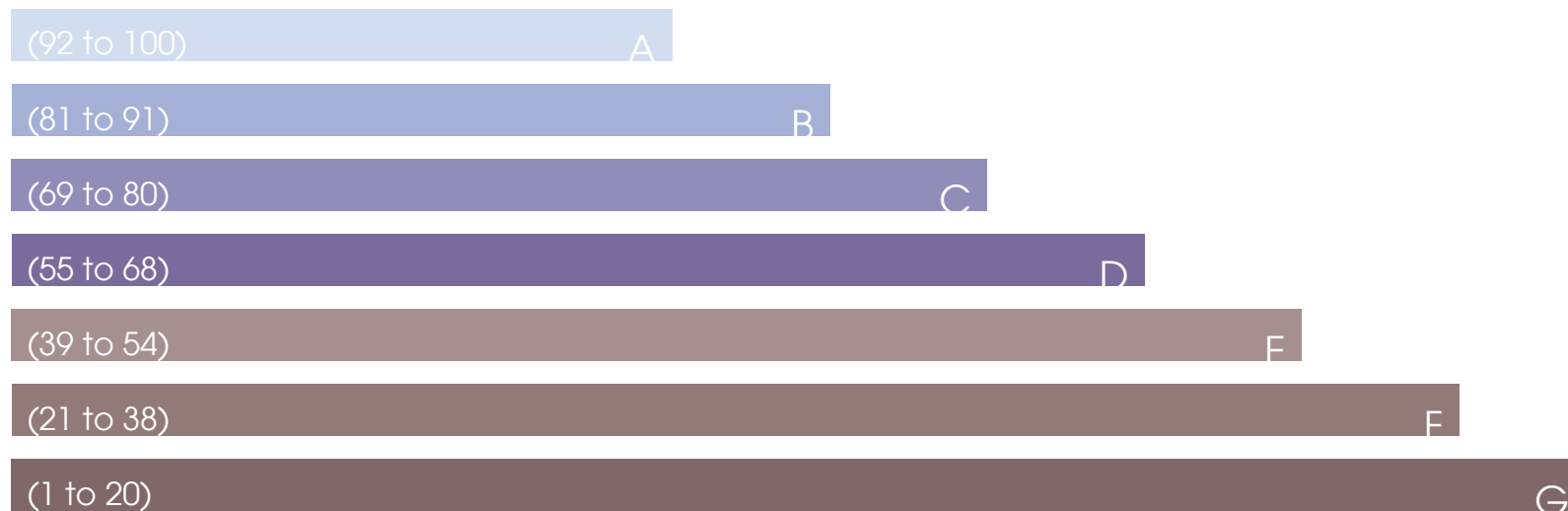
Potential



## Enviromental Impact (C0<sub>2</sub>) Rating

Current

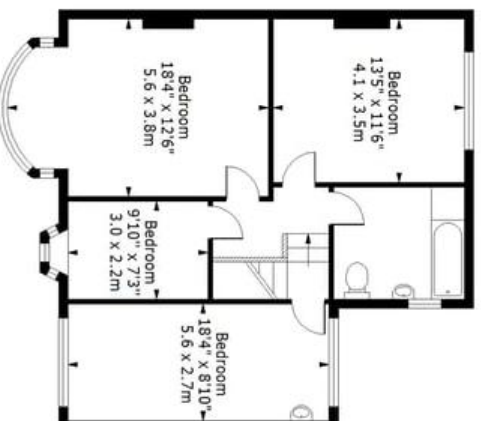
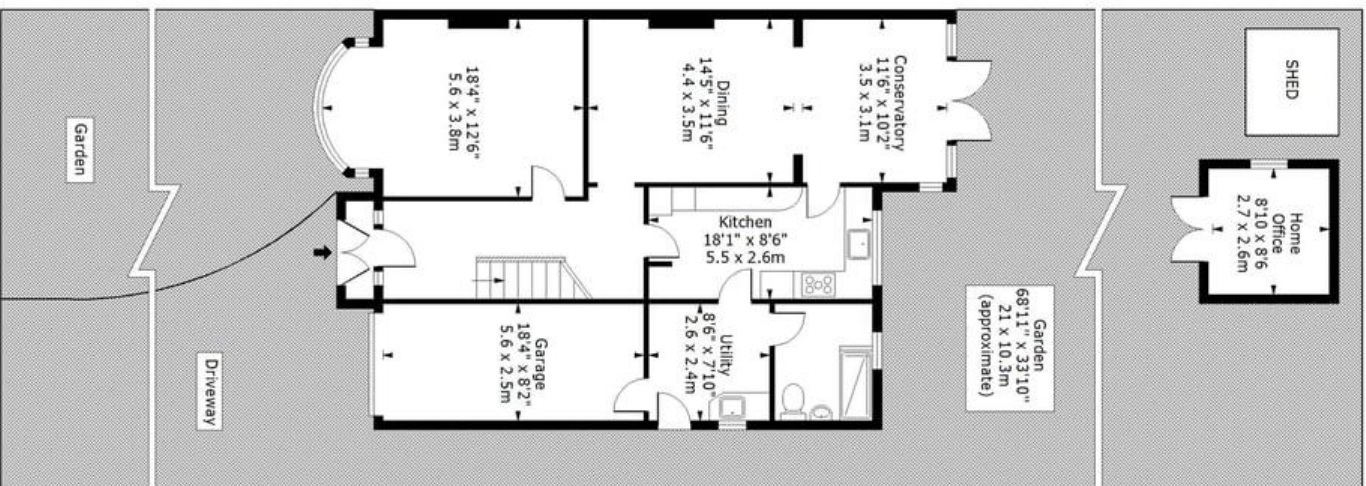
Potential





# Hawes Lane, West Wickham, BR4

Approx. Gross Internal Area 1801 Sq Ft - 167.37 Sq M



## Ground Floor

Floor Area 1064 Sq Ft - 98.85 Sq M

## First Floor

Floor Area 737 Sq Ft - 68.47 Sq M

For Illustration Purposes Only - Not To Scale